



# Leveraging Digital Advancements for Enhanced Uptime and Customer Satisfaction in Field Service Management

**Kris MEULEMAN**

Uptime and Service Sales Director

UD Trucks MEENA





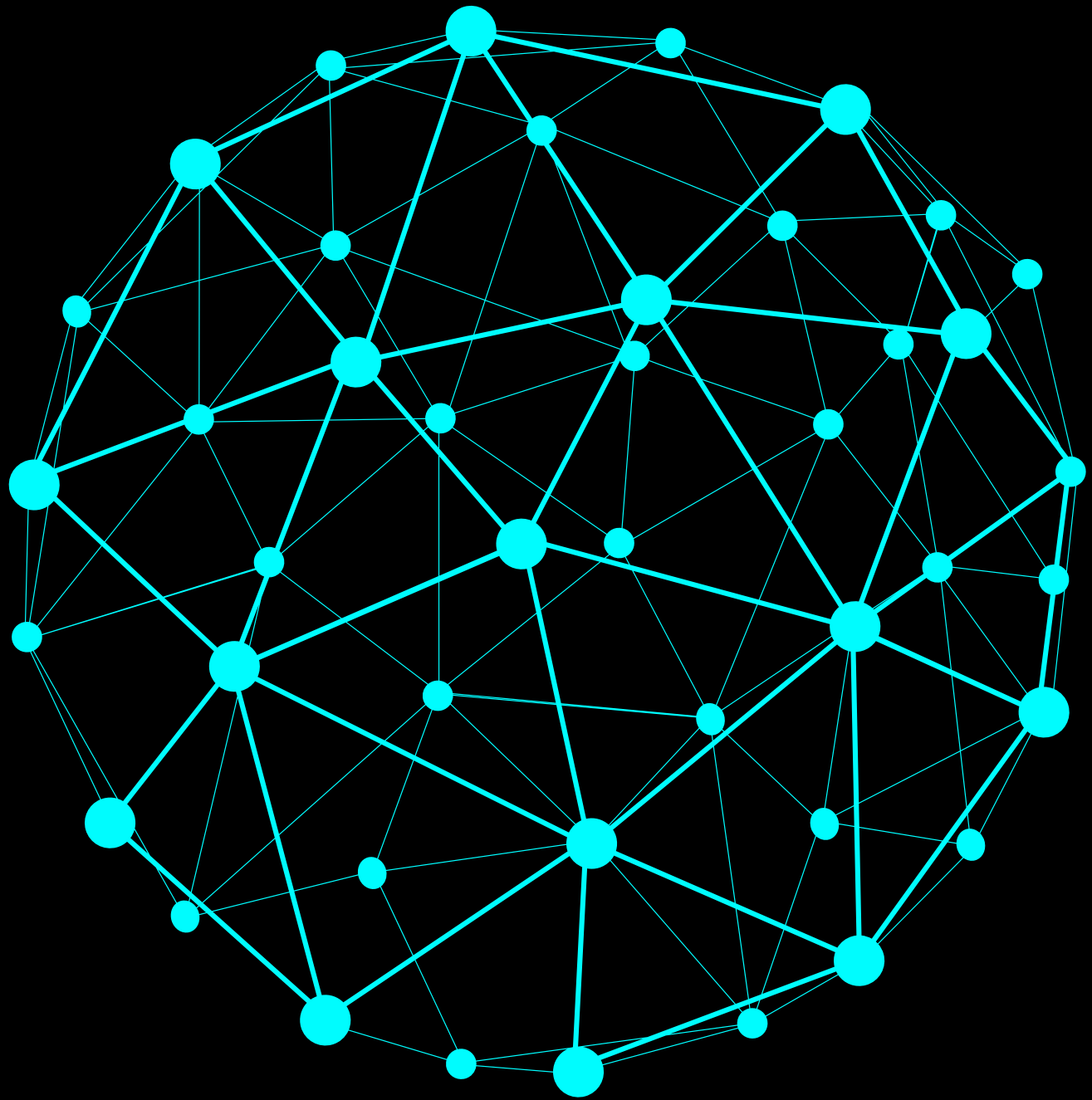


The only constant in life is  
change.

Heraclitus of Ephesus

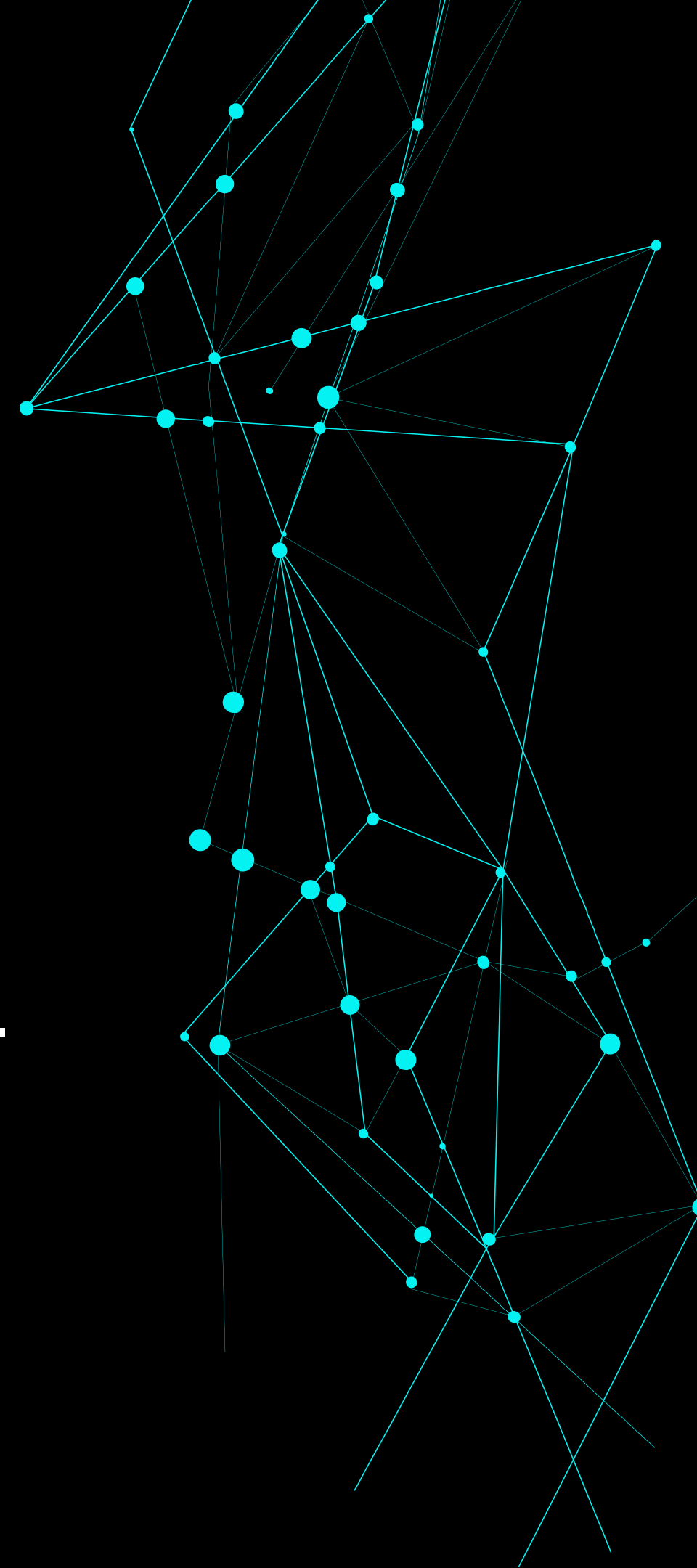


# Connectivity



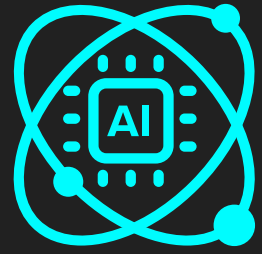
The world is **ever**  
**changing** .

**Connectivity** quickens it.





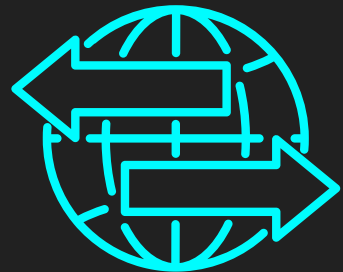
# Inevitable Integration of Digital Initiatives



Rise of  
Generative AI &  
Adoption



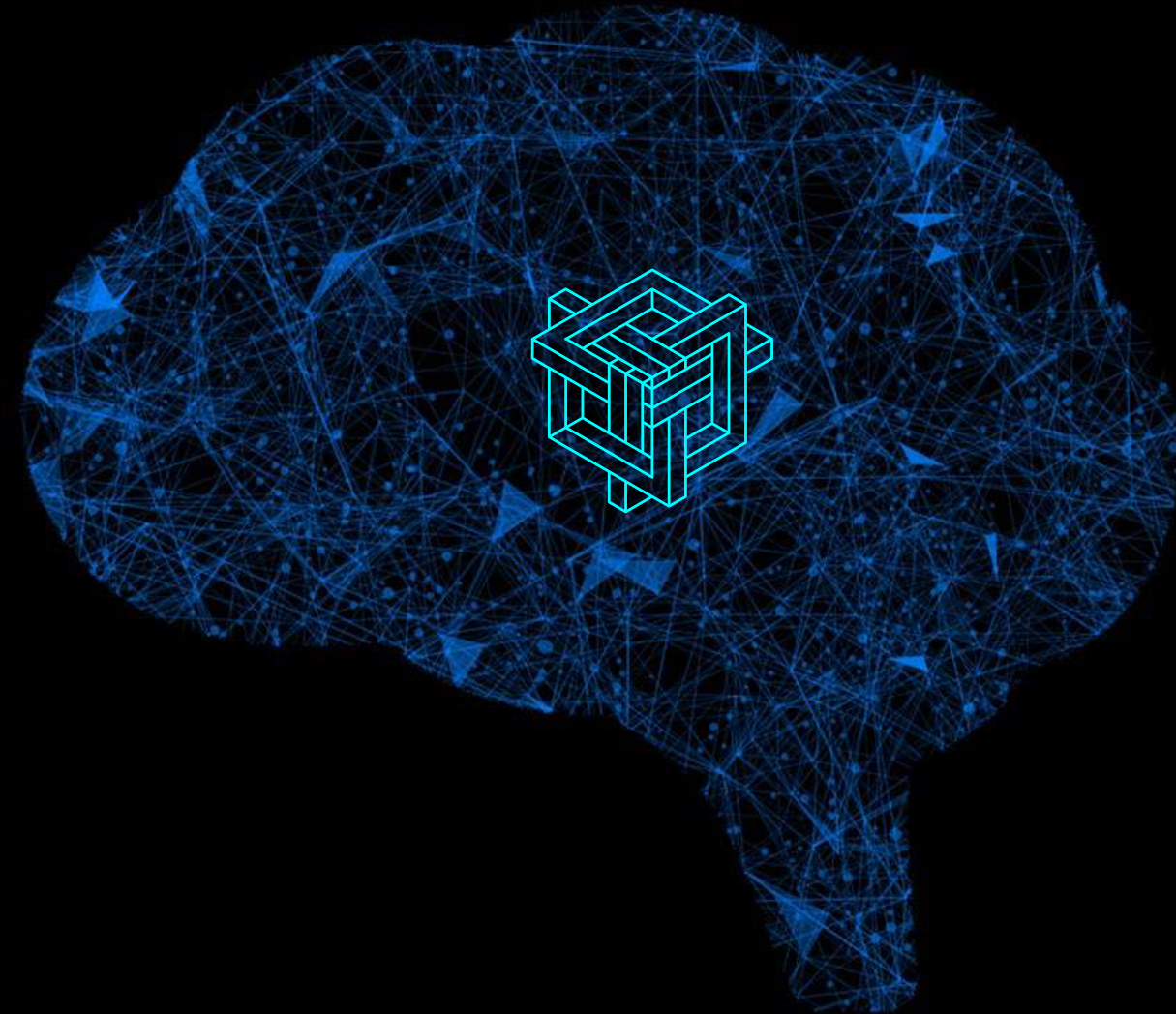
Fast Paced  
Consumer  
Habits



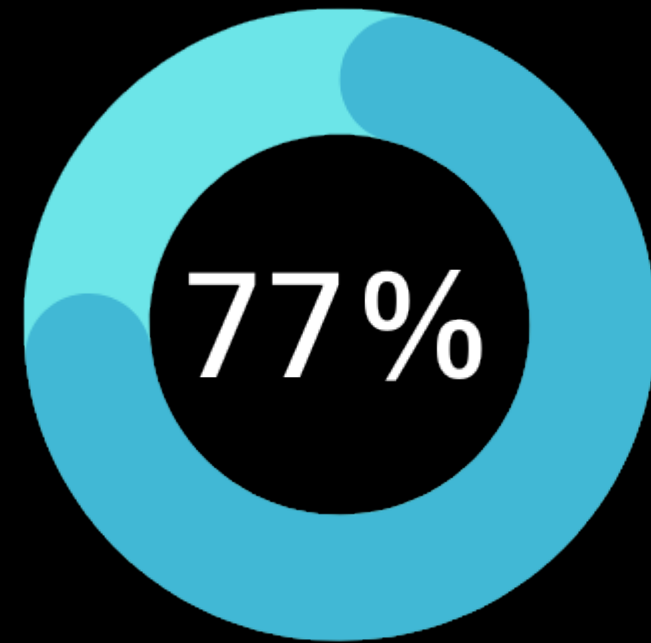
Multi -modal  
AI & Language  
Systems



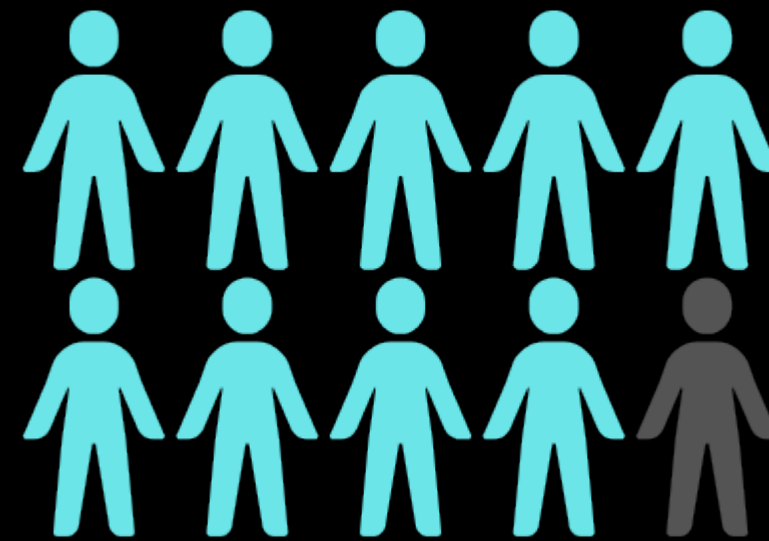
Changing Legal  
Environment



# Keeping a Watchful Eye Out



Companies either using or exploring the use of AI



9 / 10 organizations support AI for competitive advantage

**\$15.7B**

Total contribution of AI to global economy by 2030

# Critical Milestones for Success

## Connected Services

What is connectivity?

How is it evident?

Connectivity in Commercial Segment



## Connectivity and Mobility

Types of new technologies

Affects of Connectivity and Data

to Mobility

## Safety & Features

How connectivity helps safety?

What do we get via connectivity?

Mining and understanding the data



## Smart Cities & Environments

Building cities with data

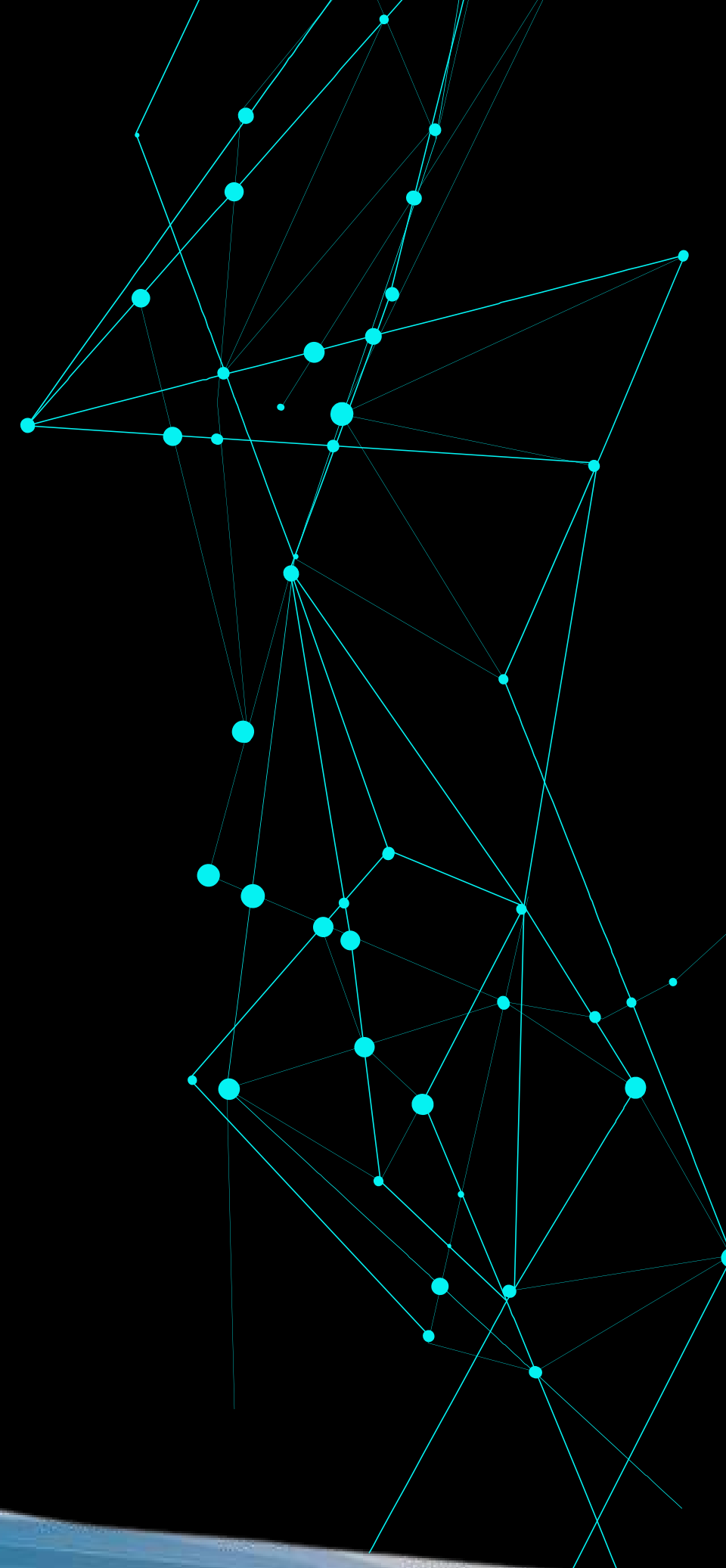
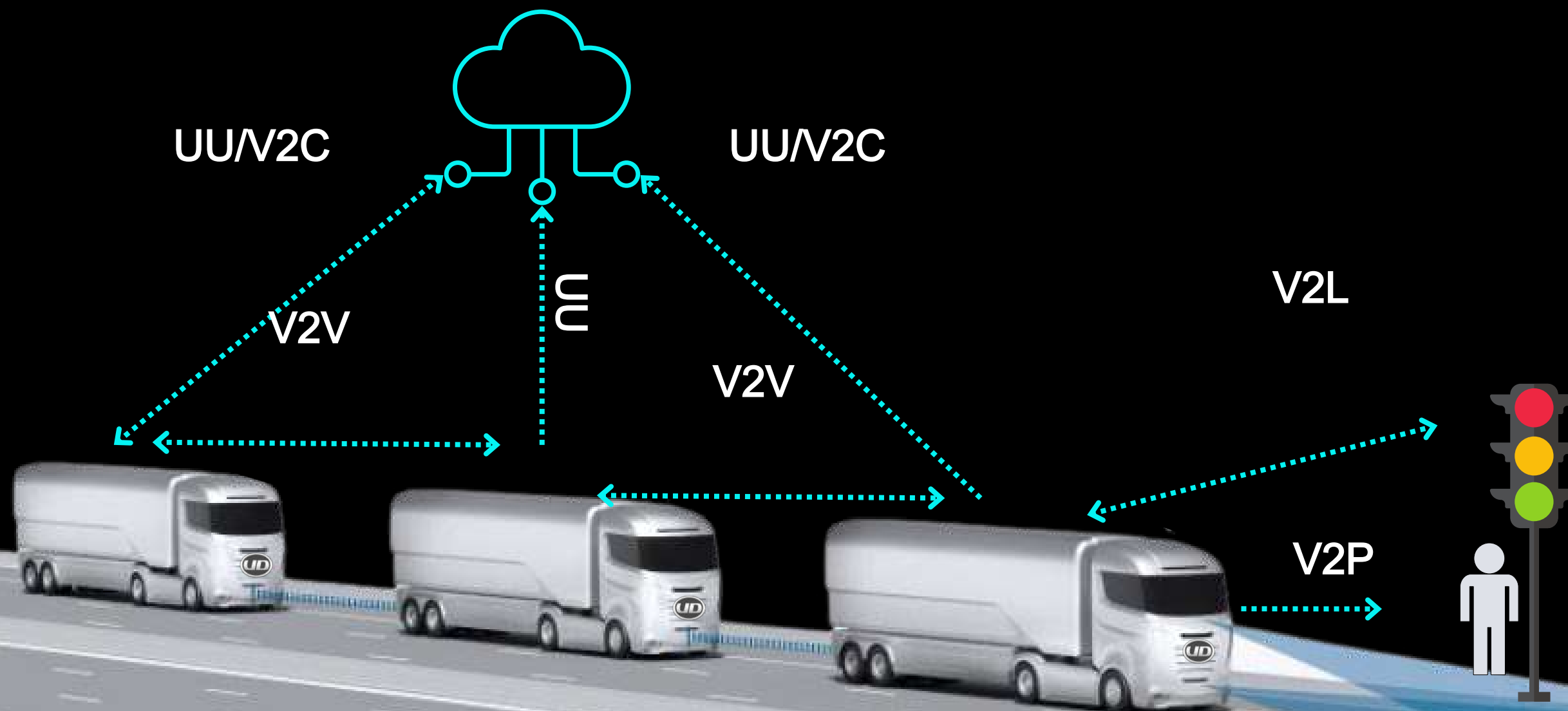
Contribution of smart

automotive



# SEAMLESS INTERCONNECTIVITY

V2V, V2L, V2P, V2I, V2C, V2X



# CONNECTIVITY



Vehicle to  
Vehicle



Vehicle to  
Driver



Vehicle to  
External  
Environment



**Connectivity**  
(Key Distruptor and Enabler)

**Enabler for Advancements**  
(AI, Electrification, Automation, etc.)

- Connected Solutions**
- Geofencing
  - Route optimization
  - Fleet optimization
  - Fleet optimization
  - Fuel consumption optimization

**Emergency Support**  
(Triggers in case of emergency)



# MINING the DATA



# INTERPRETING the DATA

Improved user experience and safety - and more



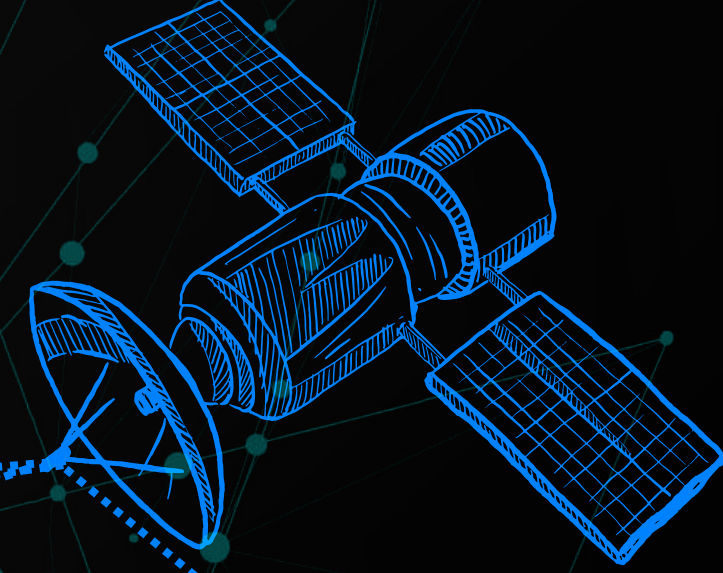
- Helps reduce TCO
- Focus on drivers & driving comfort
- Increased uptime
- Better operations management





# Telematics and Connected Services

## Key Arguments



### Optimized Business

- Total Fleet Visibility
- Real time track & trace
- Geofencing
- Vehicle usage report
- Trip report
- UD Data Interface API



### Smarter Logistics

- Better logistics processes
- Smarter logistics lead to increased efficiency and profitability



### Uptime

- Boosted uptime
- Maintenance management
- Health status & health monitoring
- Trip inspection
- Proactive support



### Automation

- Improving safety and efficiency
- Relieving congestion for urban areas
- Transforming logistical flows and enabling goods

# Traditional Fleet Operations



## Vehicle Maintenance

- **Manual inspections** and adherence to maintenance schedules
- **Reactive repairs** based on breakdowns or driver reports
- **Paper -based record keeping** for service history and parts inventory
- **Limited visibility** into vehicle health and potential issues



## Driver Management

- **Paper based** routing and delivery assignments
- **Limited communication** between dispatch and drivers
- **Manual time tracking**
- Focus on schedules, and **less emphasis on driver behavior**



## Route Management

- **Static routes** planned manually, limited route optimization
- **Inefficient routing** leading to increased fuel consumption and delivery times
- **Difficulty in responding** to real -time conditions and changes
- **Limited visibility** into driver location and/or progress



**INEFFICIENCIES**



# Smarter Logistics



PLANNER

- Optimized Route Planning
- Smarter Cities
- Higher Flexibility
- Increased efficiency
- Optimized Fleet Management



DRIVER

- Safety
- On board coaching
- Lower stress
- Higher comfort



CUSTOMER

- Efficient loading/unloading
- Faster turnaround
- Higher profitability

# EFFICIENCY

# Optimized Business

EFFICIENCY

1

Time  
Management



Efficient Fleet  
Management



Real Time  
Track & Trace

RESOURCES

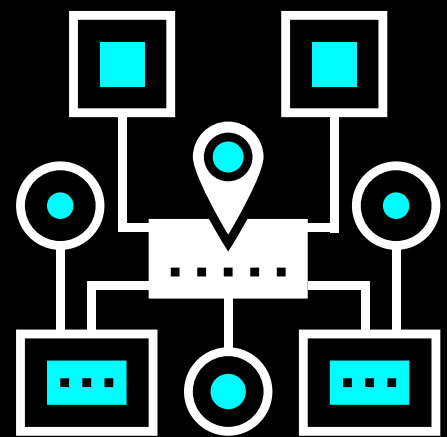
2

Workshop  
Management

PROFITABILITY

3

Uptime  
Management



Geofencing



Vehicle Usage  
Report

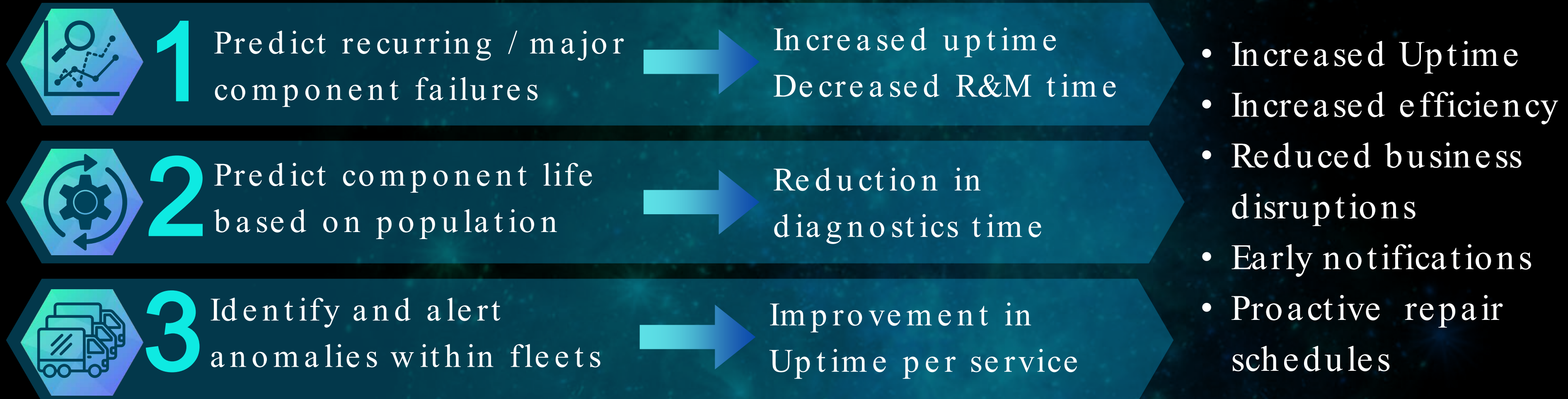
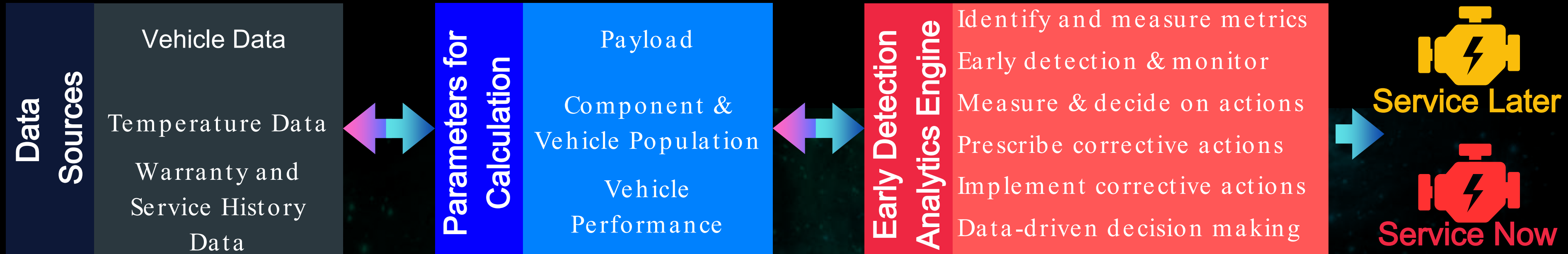
DIGITALIZATION

4

Connected  
Business



# Uptime



# AUTOMATION

## Towards the Full Autonomy



- Different levels of automation



- Improving efficiency, safety, relieving congestion



- Transforming logistical flows and enabling goods

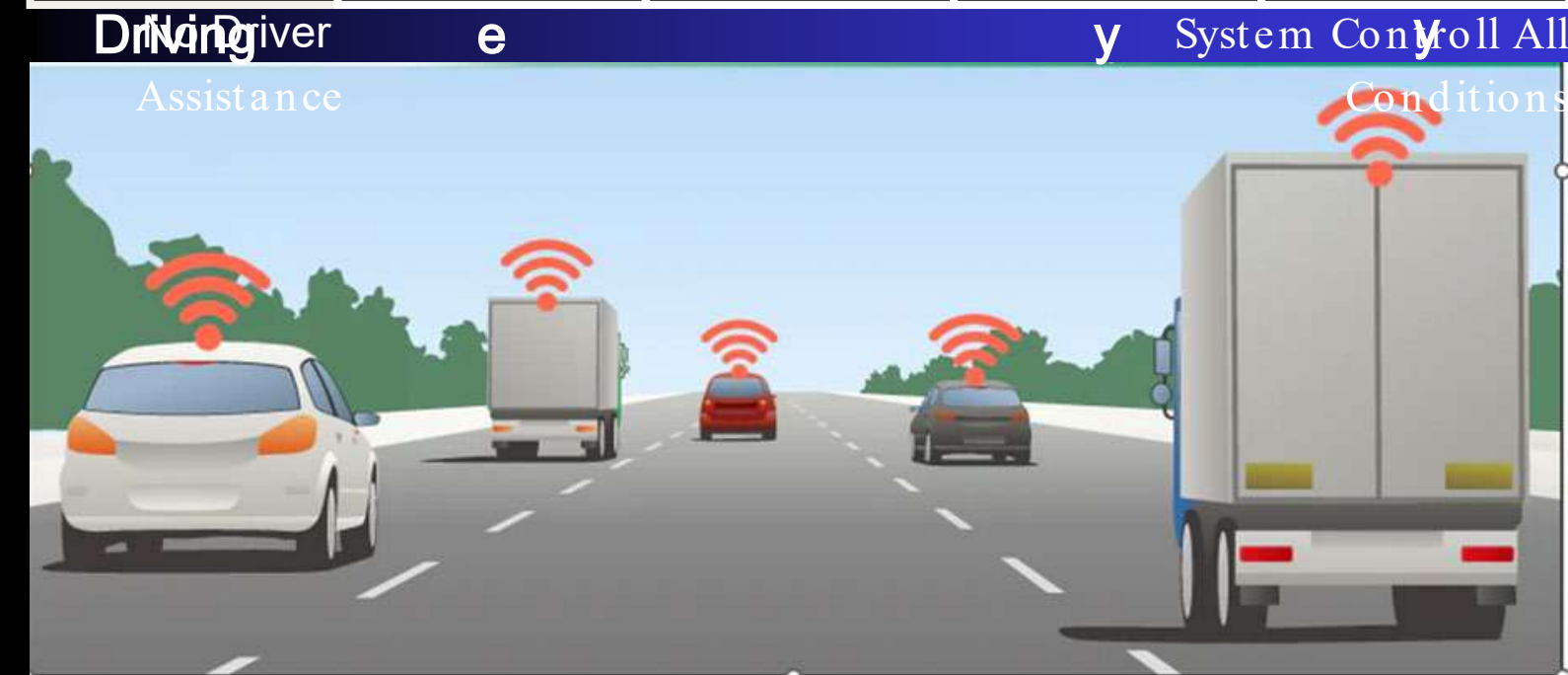


- Logistical centers transforming to autonomous



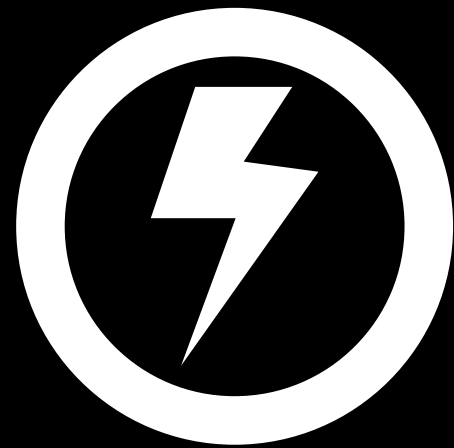
- Revolutionizing possibilities for transport

LEVE L	LEVE L	LEVE L	LEVE L	LEVE L
Manua l	Driver Assistanc	Conditional Autonomy	High Autonom	Full Autonom



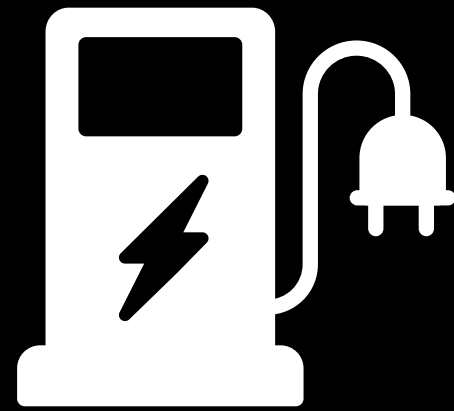


# Barriers for Mass Adoption



## Limited Energy Supplies

Electricity Generation  
Capacity  
Storage  
Retail



## Early Stage of Infrastructure

Investment  
Equipment Supply  
Maintenance  
Operation  
Monetization



## Governmental Regulations

Regulations  
Incentives



## Urban Restrictions

Optimized total solution  
Network Readiness  
Competencies



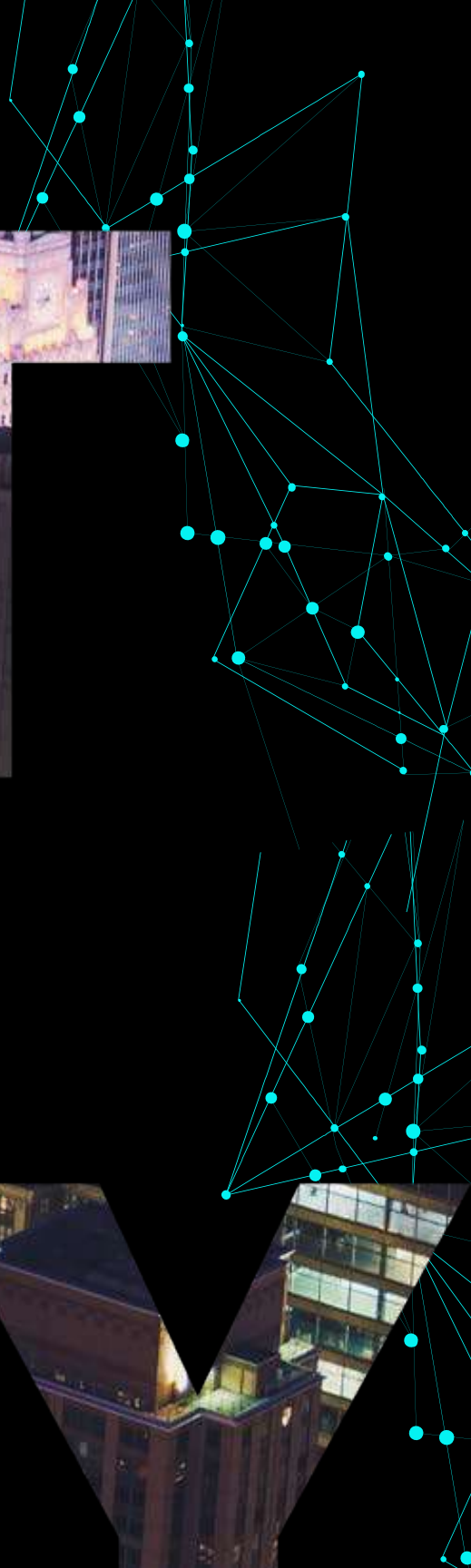
## Customer & End User

Convenience Readiness  
Truck Optimization



SMMART

SOQERY

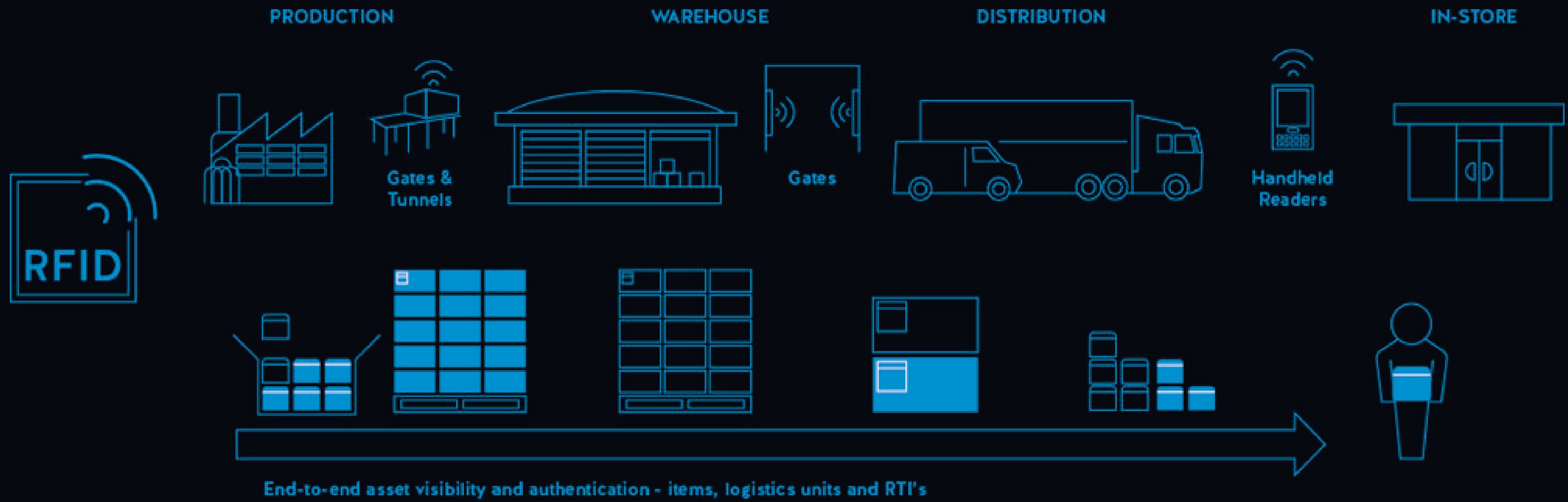




# Smart Logistics for Smart Societies



## INTEGRATION & CONNECTIVITY





*“A journey of a  
thousand miles  
begins with a single  
step”*

Lao Tzu







**THANK YOU!**